



LIFEOMIC

ROADMAP TO THE CLOUD

# Adding a Mobile App to Your Medical Device



lifeomic.com

**Don't struggle with the journey when you can enjoy the view on the way up.**

Partnering with LifeOmic allows you to focus on building your product and accelerating its speed to market. We know the terrain and have already taken care of HIPAA-compliant cloud storage, HITRUST certification, user management, user engagement with our configurable mobile app, and much more.

- US
- YOU
- TOGETHER



9.

APP  
PUBLISHING



8.

DAILY ACTIVITIES  
AND EDUCATION



7.

STYLING  
AND DESIGN



5.

USER  
MANAGEMENT



6.

MOBILE  
APP SHELL



HITRUST

4.



3.

CLOUD STORAGE



2.

DEVICE  
CLIENT



1.



ROADMAP  
TO THE  
CLOUD



## 1: You Designed an Innovative Medical Device

**Well done!** You are in a small but mighty group of cutting-edge companies forging the way in the healthcare industry. You now need to navigate the uphill climb of implementing secure patient/user data storage without creating an avalanche of work for you and your team. You have a choice. Make the long trek on your own or rely on a partner that knows the terrain and has already paved the way.

## 2: You Need Device Client Registration & Authorization

The first stop on your journey is to design and implement a solution for how devices are authorized to send data to your account. You don't want to allow any slack for a device to send data into your system. You'll want to take the lead on what actions devices are allowed to do. LifeOmic can take care of these items so that you can concentrate on what you're good at, building your device and bringing it to market.







### 3: Let's Talk About Cloud Storage

We'll never tell you to get your head out of the clouds. In fact, we think all your data should live there.

Future-proof your medical device with LifeOmic's secure, HIPAA-compliant cloud storage that makes data sharing a walk in the park. Because the cloud can be used collaboratively in so many capacities, med device creators are increasingly turning to the cloud for its cost effectiveness, scalability, and flexibility.

### 4: The Crux of Your Journey: HITRUST Certification

You've come a long way, baby! Welcome to the crux of your journey. You know you need to demonstrate your organization has met the gold standard for compliance to bring peace of mind to your business, customers, and partners.

However, because of its complexity, HITRUST certification can be a massive undertaking that requires a significant amount of time, money, and resources. Don't worry, we've done the work for you.

The LifeOmic Platform was built to handle the most complex types of data, was architected with the highest security in mind, and is already HITRUST compliant.





## 5: Manage Users

User management is another important part of your journey you won't want to overlook. You need a system for controlling who has access to your data and for administering your account.

Let LifeOmic take the lead. We've taken care of user signup, invitations, and access control so you can focus on building your device and tackling any obstacles that may arise.

## 6: Utilize our Configurable Mobile App Shell for User Management Authentication

Care journeys can be daunting to traverse. If you have a consumer-facing mobile application then you have additional user management requirements to navigate.

Deliver a custom pathway with our configurable mobile app that includes invitations, an intuitive signup process, eConsents and more. You can easily lock down the actions allowed by your users and what data they can access so no one veers off the path.





## 7: Custom Styling & Design

Guide your patients/users with a clear and customizable pathway that can be integrated with a healthcare team. Create daily outpatient programs with your unique content or use our extensive library branded with your logo and colors.

Admins can access a patient portal and provide daily tasks and goal setting, as well as track activity, nutrition, sleep, water intake, and social interactions.

## 8: Daily Activities & Education

You wouldn't head out to the trail without a map. Why expect your patients/users to do it?

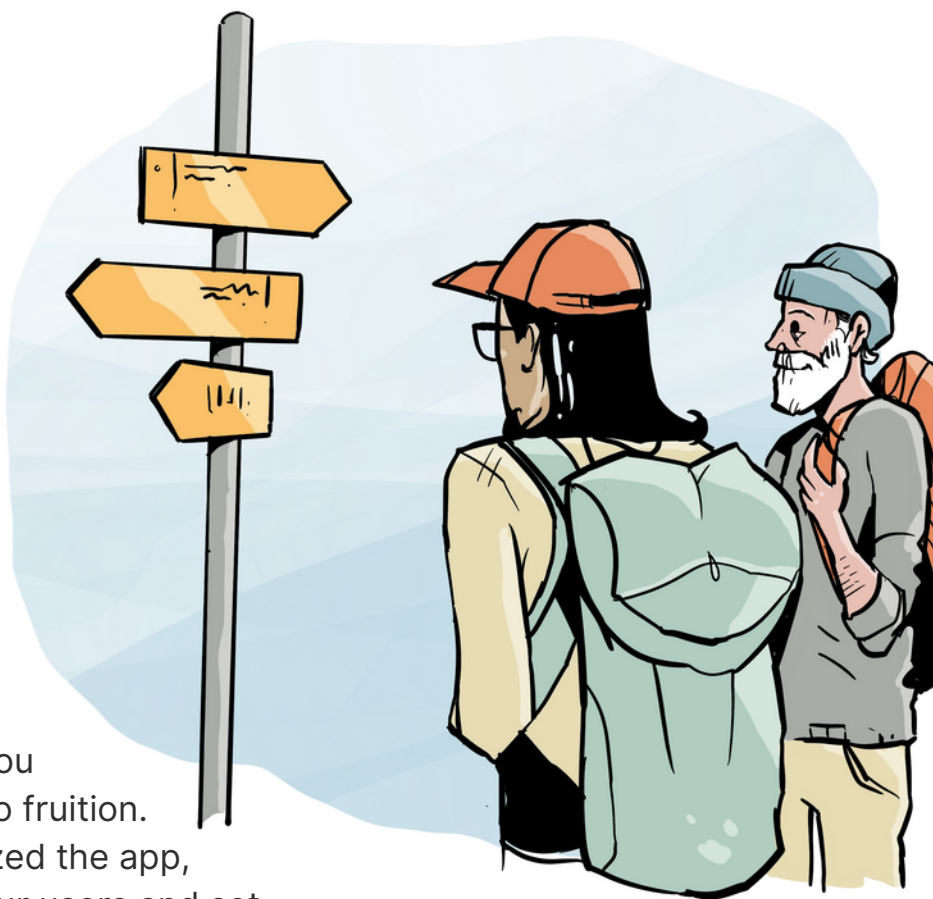
Quickly and easily create daily programs, without the need of a developer, to improve adherence, increase health education, and drip resources using custom content or our extensive library. Drive engagement and give your patients/users the confidence of what to expect next on their journey.



## 9: Time to Publish Your App

You've come to the end of your journey. You've set up all the activities and educational materials that your users/patients should tackle to achieve their desired outcome in their journey and you're now ready to make it available.

This is the exciting step where you see all of your hard work come to fruition. You've built the device, customized the app, and are now ready to engage your users and set them on the right path toward their individual goals.



## About LifeOmic

Our cutting-edge technology helps power precision health for more than 5 million people. Our mission is to equip providers, researchers, and health-focused enterprises in their pursuit of precision health care. The LifeOmic Platform forms the technology backbone for managing complex health data and building transformative products.





**Let LifeOmic help you  
with your journey to  
the cloud.**

lifeomic.com  
info@lifeomic.com  
855-LIFEOMIC

